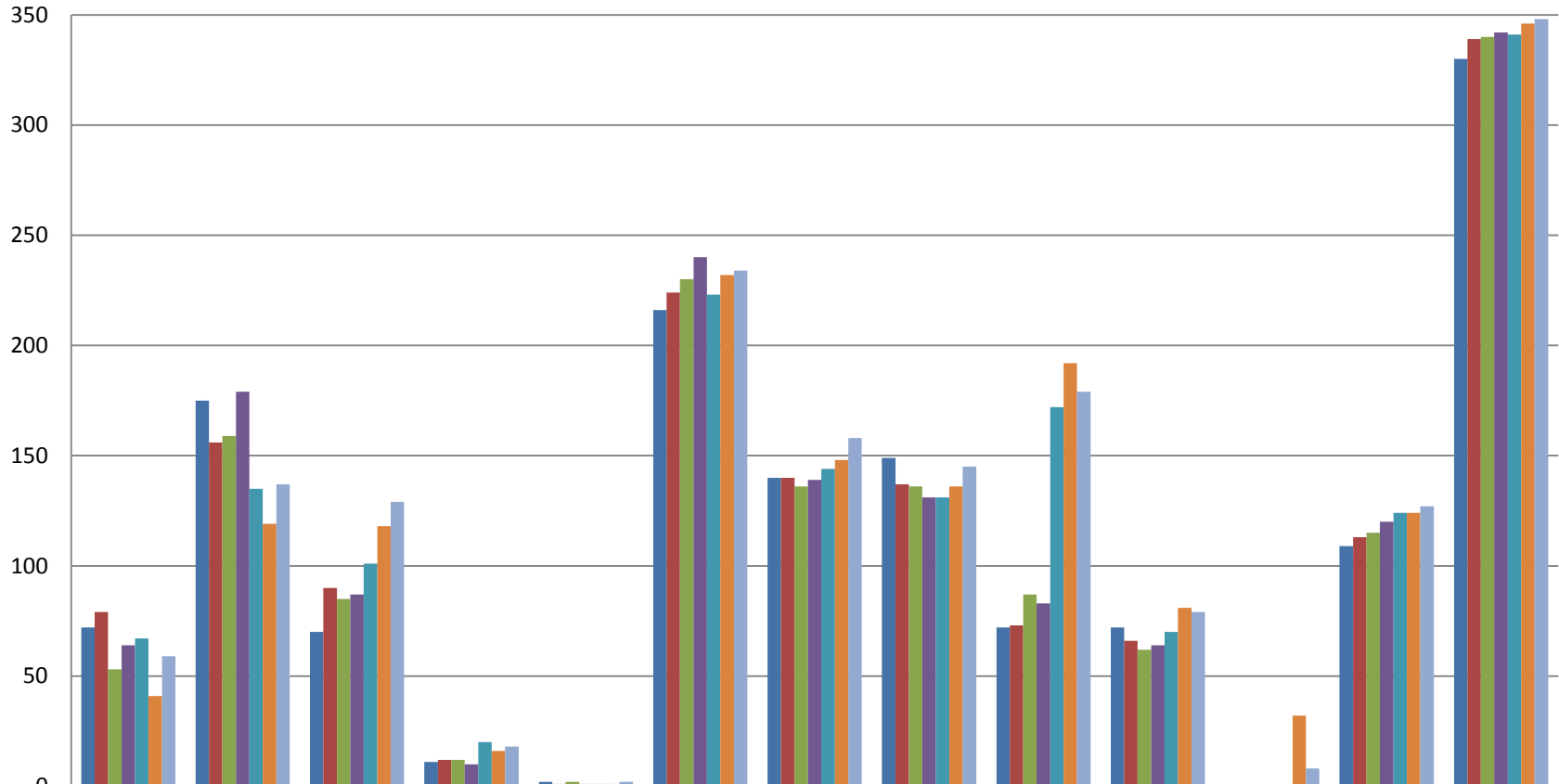


Membership August 31, 2015



	Dues Only (\$20)	\$21 to \$50	\$51 to \$100	\$101 to \$200	\$201 plus	Fireworks	Flower Fund	Fish Fund	Safety Fund	Recreation Fund	Paver Purchase	Residents	Members
Dec-2009	72	175	70	11	2	216	140	149	72	72	0	109	330
Dec-2010	79	156	90	12	1	224	140	137	73	66	0	113	339
Dec-2011	53	159	85	12	2	230	136	136	87	62	0	115	340
Dec-2012	64	179	87	10	1	240	139	131	83	64	0	120	342
Dec-2013	67	135	101	20	1	223	144	131	172	70	0	124	341
Dec-2014	41	119	118	16	1	232	148	136	192	81	32	124	346
Aug-2015	59	137	129	18	2	234	158	145	179	79	8	127	348